



SN-IPR5843BZAN-J2-Z

4MP IR Bullet AI Network Camera



Key Features

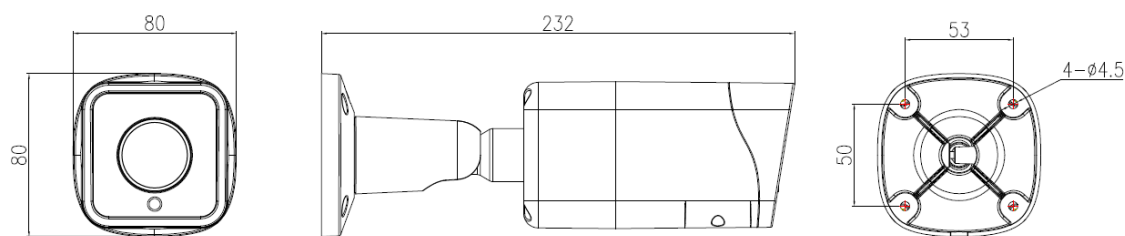
- 1/2.8" Progressive Scan CMOS
- 2.7 ~ 13.5 mm motorized lens
- 25fps/30fps @ 4MP(2592×1520)
- Triple streams
- Support face, human and vehicle detection and capture
- True WDR, 3D DNR, Defog, HLC, Anti-shake and ROI
- Smart IR up to 40 m
- IP67

Specification

Camera	
Image Sensor	1/2.8" Progressive Scan CMOS
Effective Pixels	2592(H)×1520(V)
Electronic Shutter	Auto/Manual, 1/5 ~ 1/20,000s
Min. illumination	Color: 0.05 Lux @ (F1.2,AGC ON) , B/W: 0 Lux @ (IR LED ON)
S/N Ratio	55 dB
Day/Night	Auto(ICR)/Day / Night/Timing
Wide Dynamic Range	True WDR 120dB
IR Range	Up to 40 m (131.2ft)
IR On/Off Control	Auto/Manual
Pan/Tilt/Rotation Range	Pan: 0°~360°, Tilt: 0°~90°, Rotation: 0°~360°
Lens	
Lens Type	Motorized focal
Iris	Fixed Iris
Focal Length	2.7 ~ 13.5mm
F Number	F1.6
Angle of View	H: 95.6° ~ 27°, V: 54° ~ 16°
Video	
Max. Resolution	4MP (2592×1520)
Streaming Capability	3 Streams
Stream/Frame Rate	Stream1: 2592×1520, 2560×1440, 2304×1296, 1920×1080, 1280×720 @ 25/30fps Stream2: D1, VGA, 640×360, CIF, QVGA @ 25/30fps Stream3: VGA, CIF, QVGA @ 25/30fps
Bit Rate Control	CBR/VBR
Bit Rate	Stream1: 100kbps ~ 16Mbps Stream2: 10kbps ~ 6Mbps Stream3: 10kbps ~ 3Mbps
Image Enhancement	HLC/BLC/Anti-shake/Defog /WDR
White Balance	Auto/Tungsten/Fluorescent/Daylight/Shadow/Manual
Mirror	Support
Aisle Mode	N/A
Noise Reduction	2D/3D DNR
Region of Interest	Off/On (8 Zone, Rectangle)
Motion Detection	Support
Privacy Masking	Support

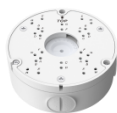
Audio	
Audio Compression	G.711, RAW_PCM
Bit Rate	8kbps, 16kbps, 64kbps
Network	
Protocols	IPv4/IPv6, 802.1x, HTTP, HTTPS, TCP/IP, UDP/IP, RTSP, DHCP, NTP, RTCP/RTP, PPPoE, SMTP, DNS, UPnP, FTP, ARP, SNMP, TLS/SSL
Interoperability	ONVIF, SDK, CGI
Streaming Method	Unicast
Max. User Access	10 Users
Web Viewer	<IE11, Chrome, Firefox, Microsoft Edge
Management Software	SunView
Intelligence Function	
Intelligent Analysis	Perimeter, Single Virtual Fence, Double Virtual Fences, Converse (human or vehicle), Multi Loiter, Personnel Count
AI Multi-object	Detects face, human and vehicle detection and capture
Interface	
Ethernet	1 Ethernet (10/100 Base-T) RJ-45 Connector
Audio	1ch Input, 1ch Output
Alarm	1ch Input, 1ch Output
Reset Button	Support
Storage	Built-in Micro SD card slot, up to 256GB
Electrical	
Power Supply	DC12V/POE (IEEE 802.3af)
Power Consumption	Max 8 W
Operating Temperature	-40°C ~ 50°C (-40°F ~ 122°F)
Operating Humidity	Less than 90% RH
Ingress Protection	IP67
Certifications	CE/FCC
Casing	Metal
Dimensions	232 × 80 × 80mm (9.13" × 3.15" × 3.15")
Net Weight	0.81 Kg

Dimensions (mm)



Accessories

Optional:



SN-CBK649B
Junction Box



SN-CBK627D
Pole Mount