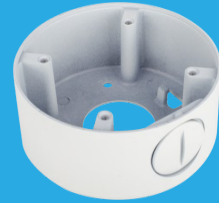


# SN-BK322B

## Junction Box



## Specification

Parameter	
Application Model	Please see "Accessory Selection"
Material	Aluminum alloy
Color	White
Operating Humidity	0% - 90% RH
Load Bearing	2 kg (4.4 lb)
Product Dimensions	$\phi 95 \times 42\text{mm}$ ( $\Phi 3.74 \times 1.65"$ )
Product Weight	0.21 kg (0.46 lb)

## Dimensions (mm)

